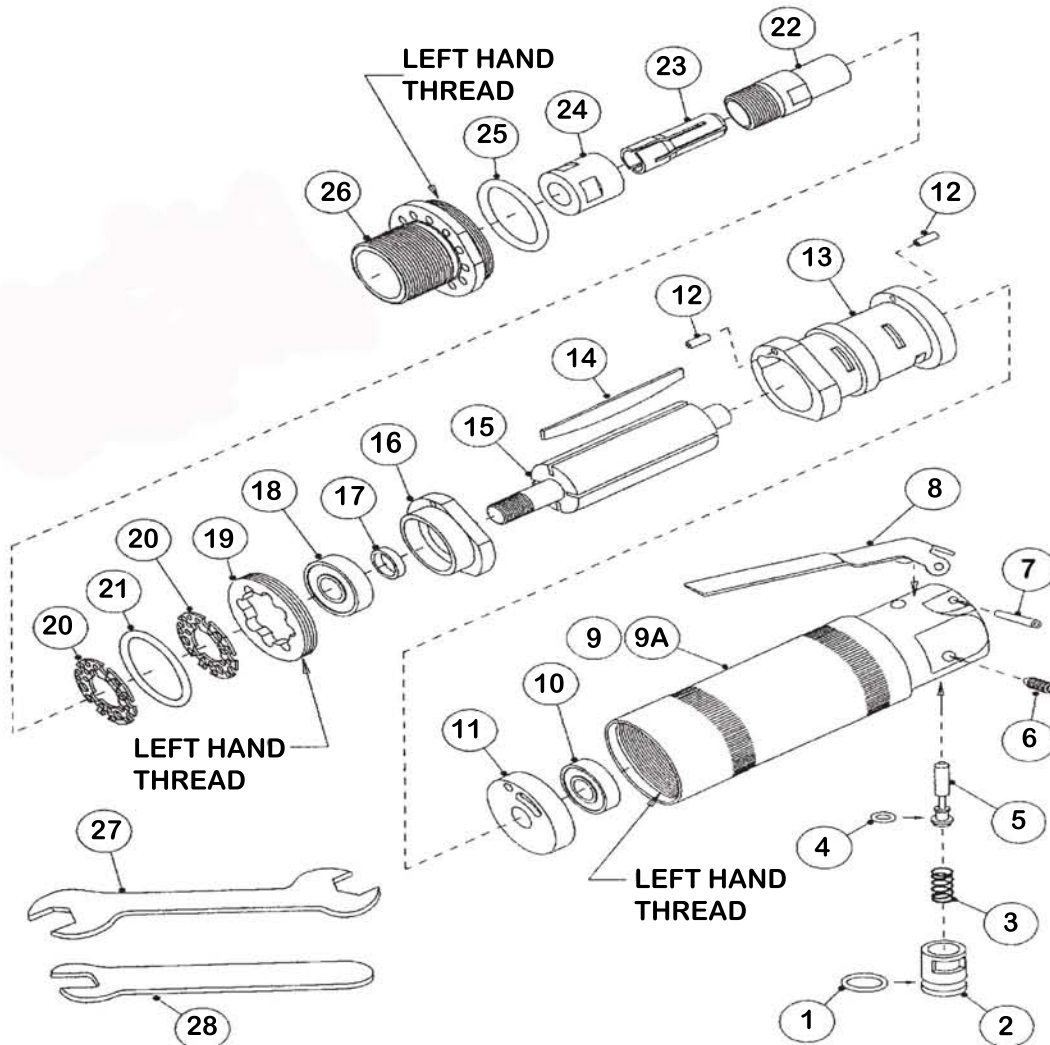


DIATRIM

TRIMMER MODEL 30-HSR25



DIATRIM TOOLS LTD.

2830 De Miniac, Montreal, Quebec, H4S 1K9

Tel.: 1-888-336-4893 - Tel.: (514) 336-7280 - Fax.: (514) 336-1344

E-Mail: info@diatrim.com

WWW.DIATRIM.COM

30-HSR25 Parts Breakdown & Price List

Ref.	Description	Part number
1	O-Ring	G-3001
2	Cap Regulator	G-3180
3	Spring Throttle Valve	G-3181
4	O-Ring	G-3083
5	Valve Throttle	G-3179
6	Screw - Set	G-3193
7	Pin Throttle Lever	G-3089
8	Lever Throttle	G-3777
9	Housing Motor	G-3649
10	Bearing - Ball	G-3412
11	Plate Rear End	G-3182
12	Pin - Liner	G-3791
13	Liner	G-3183
14	Blade - Rotor	G-3191
15	Rotor	G-3184
16	Plate - Front End	G-3185
17	Spacer - Bearings	C-3192
18	Bearing - Ball	G-3326
19	Nut Clamp	G-3187
20	Washer Noise Reduction	G-3859
21	O-Ring	G-3515
22	Shank	G-3256
23	Collet 1/4	G-3729
24	Nosepiece - Collet	G-3255
25	O-Ring	G-3740
26	Nut Adapter	GR-2080
27	Wrench - Open End	G-3327
28	Wrench - Collet	G-3858
29	Dust Collector Guard	15-G104-HSR

WARNING!

Failure to obey these warnings could lead to serious injury or death -- Always wear eye protection complying with standards -- Before each use, check that the blade/cutter is free from cracks or any other damage -- Do not use if damage is suspected -- Only use for fiber reinforced plastics (FRP) -- Keep body/clothing clear of spinning blade / cutter -- Mount blade/cutter securely -- Never use blade/cutter in the saw machine that will exceed max recommended RPM -- For cutters/blades with shaft, never lean on the shaft or use the shaft as guide as this might break the shaft - Wear dust mask if dust is not completely collected at source -- Only operate saw machine when proper saw guards and protections are in place and working properly -- Properly secure work piece before cutting -- Allow saw to reach full speed before cutting -- Do not modify the air tool, the guard or the blade/cutter - Keep this label in a safe place for future reference - Standard recommended speeds: 10 000 surface feet per minute

Important

Please read these instructions before using your 30-HSR25

Check tool thoroughly and make sure the router bit has not been bent during shipment, turns freely and is securely attached to the collet. It is important that a filter / regulator / lubricator be located as near as possible to the trimmer(s) being used. Ensure that the air from the compressor is directed through the filter / regulator **first**, then through the lubricator.

1- Filter :

Will remove dirt, moisture, etc. from the air

2 - Regulator :

Should be set at 90PSI (**not higher**). Pressure should be checked at the tool inlet while tool is running.

3 - Lubricator :

Fill with good quality air tool oil (SAE5). Properly lubricating tools can extend tool life up to five times. Set lubricator to release 3-4 drops of oil per minute into airline of tool.

DIATRIM recommends that you use a minimum air hose size of 3/8" I.D. Air hose length, from lubricator to tool, should not exceed 30 feet.

AVERTISSEMENT!

Ne pas tenir compte de ces avertissements pourrait causer de graves blessures corporelles -- Toujours porter des lunettes protectrices conformément aux normes -- Avant chaque utilisation, s'assurer que la lame/le couteau est exempt de fissures ou de tout autres bris. Ne pas utiliser si un bris est suspecté -- Utiliser seulement pour couper la fibre de verre et la fibre de carbone -- Tenir le corps et les vêtements éloignés de la lame/couteau en mouvement -- Bien installer la lame/le couteau -- Ne pas utiliser la lame/le couteau avec une outil qui dépasse le nombre maximum de tours/minute recommandés -- Pour les lames/couteaux avec mandrins, ne jamais s'appuyer sur le mandrin et ne jamais utiliser le mandrin comme guide de coupe : ceci peut briser le mandrin - Porter un masque contre les poussières -- Utiliser la scie seulement si le dispositif de sécurité est en place et en état de marche -- Avant la coupe, bloquer fermement la pièce à travailler -- Avant de commencer à travailler, attendre que la scie atteigne la vitesse indiquée -- Ne pas modifier l'outil pneumatique, le garde ou la lame/couteau - Garder ces instructions en lieu sûr pour des futures consultations - Vitesse recommandée : 10 000 pieds linéaires par minute